

Published by the Tourist Authority South Moravia
in cooperation with TIC in South Moravia and Regional
museum in Mikulov

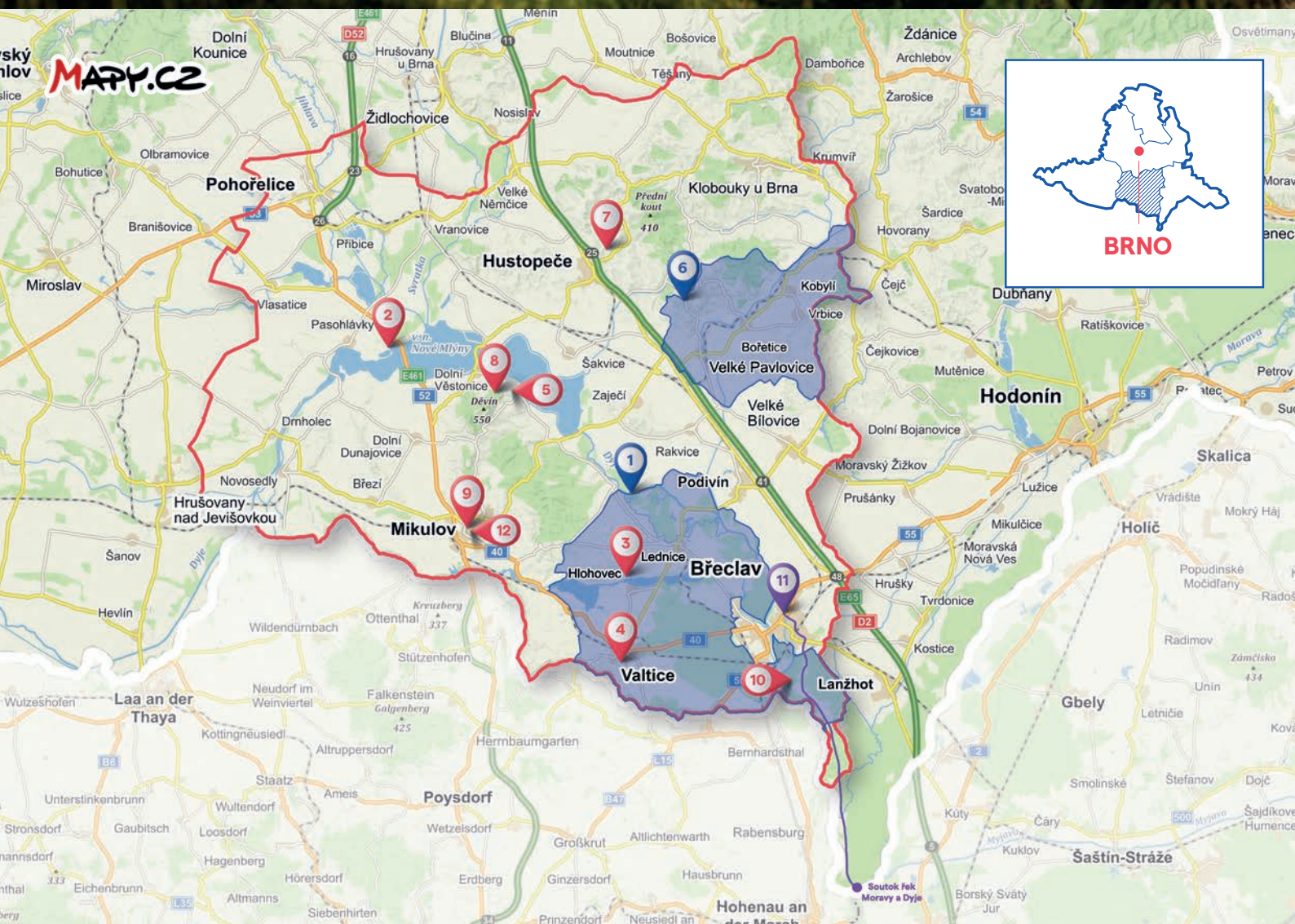
The project Strengthening of Marketing Activities and
Development of Partnerships in the South Moravian Region
was implemented with the contribution of funds from the
state budget of the Czech Republic from the program of
the Ministry for Regional Development.



© South Moravia – photo bank, authors: Marek Topolář,
Erik Knotek, m-ARK, Jan Miklín, archiv Mikulovsko z.s.p.o.
Leave your worries and your car at home when travelling
around South Moravia – you can use www.idsjmik.cz

The Romantic Region PÁLAVA AND LEDNICE-VALTICE AREA

EN



1



LEDNICE-VALTICE'S DELIGHTS

The Lednice-Valtice Area, the garden of Europe! The largest artistically designed landscape in the world, listed among the UNESCO World Heritage sites since 1996. See the Apollo Temple, Pond Chateau, Border Chateau, New Farmyard, Three Graces, Chateau Jan, Obelisk, Reistna Collonade or Rendez-vous in an endless trip across historic styles.

Extra tip: The Minaret can be reached on foot or on water from the castle. The castle has magnificent interiors and the local greenhouse has a circuit for those who are not fond of long tours. In Lednice, let yourself be pampered in the Perla spa house or with iodine-bromine sea water a little further in the Lednice Spa Resort.

www.zamek-lednice.com/en

2



A HUGE SWIMMING POOL COMPLEX

The largest swimming pool complex far and wide with water from a thermal source full of beneficial minerals – this is **Aqualand Moravia**. Only 20 minutes by car from Brno, with magnificent views of Pálava. Kids are interested in the 20 toboggans and water slides, while adults prefer the sauna world.

Extra tip: Follow in the footsteps of the Romans and Germans in Pasohlávky, at the Mušov visitor centre, the gateway to the Roman Empire. The Nové Mlýny reservoirs can compete with any alpine lake. Apart from swimming and windsurfing, these bodies of water invite you for a boat trip, or for cycling or hiking around their shores. You can enjoy local wines wherever you go.

www.aqualand-moravia.cz/en

3



A ROYAL TOUR ON FOOT OR BY BIKE

The Border Chateau is a temple of fantastic food. The Essens restaurant will delight you, it won first place in the Gourmet South Moravia 2019 show. The amazing grounds invite you to a café with a bowling alley, an outdoor heated swimming pool, a wine cellar and a hotel. If you are just passing by on your bike, have some ice cream or something

delicious from the bistro.

Extra tip: The Lednice Ponds nature trail is 12 kilometres long, and you will encounter such gems as the Apollo Temple or the Three Graces on the way. The trail starts in the Lednice chateau park and leads around the entire three ponds where you can enjoy looking at rare birds and rare woody plants.

www.chateaudefrontiere.com

4



WINE TASTING AT CHATEAU VALTICE

This beautiful Baroque chateau invites you to its opulent interiors, to the chateau garden and especially to some wine tasting. The perfectly renovated chateau cellar is a beautiful backdrop for a hundred of best wines of the Czech Republic of every current season. Welcome to **the National Wine Salon of the Czech Republic**. When you are done with wine tasting, visit

the chateau park.

Extra tip: The Valtice underground is a historic labyrinth from the 13th century. The total length of the 13 interconnected and renovated cellars is 900 metres. Go on a self-guided tour free of charge with your kids or come for wine tasting with your friends at any time of the year.

www.zamek-valtice.cz/en

5



WANDERING AROUND PÁLAVA

The Archeopark Pavlov will turn you into a fan of prehistory. Its futuristic appearance has won several prestigious awards for its unusual architectural design. Technology has been enthusiastically employed here. On 500 square metres, you will see objects for hunting and for the everyday life, art and rituals, burial and magic of early *Homo sapiens*.

Extra tip: A tour along the mountain ridge of Pálava? Start in Pavlov, climb to the ruins of Dívčí Hrad (Maiden Castle), also known as Děvičky, and then to the hilltop of Děvín. The views are worth it! Follow the red tourist marker of St. Jacob's trail and you will get to the viewpoint at Orphan's Castle. Visit Cafe Fara in Klentnice with a museum of coffee grinders!

www.archeoparkpavlov.cz/en

6



WINE AND LANDSCAPE VIEWS

Blue Mountains is a micro-region of 5 villages with a large number of lookout towers. For example the Kraví Hora near Bořetice in the Independent Federal Republic of Kraví Hora. Here you will find the unique Dvůrek Café Wine Bistro. The Slunečná lookout tower near Velké Pavlovice resembles a grapevine. The Walk Above the Vineyards near Kobylí does not

have a single step to climb.

Extra tip: The wine cellars in Vrbice are along the route of Moravian wine trails. A folk architecture preservation area – that is the seven storeys of wine cellars on a hillside. Taste Neuburg, Traminer or Welschriesling! There is a church and a beautiful view on the top of the hill.

www.modrehory.cz

7



ALMOND TREES AND LAVENDER

The only almond tree orchard in the Czech Republic, and the largest in Central Europe, is located in Hustopeče. A nature trail full of great views of the landscape leads there and a lookout tower is the destination! It is best to go and see the almond trees with pink blossoms in March and April. Moreover, the Festival of Almond Trees is held in March.

Extra tip: Discover the Sonberk winery in Popice. It features an outstanding building designed by architect Pleskot, sensitively set among the terrain, offering an unforgettable view of the vineyards and the Pálava hills. Visit a lavender farm in Starovičky. The month when lavender is entirely in bloom is June.

www.hustopece.cz/en/hustopece--the-heart-of-vineyards-and-almond-trees

8



PÁLAVA WINE & OTHER GOOD THINGS

The Pálava Protected Landscape Area, a UNESCO World Heritage site and the warmest part of the Czech Republic, has been popular since time immemorial, as evidenced by a number of archaeological sites. Prehistoric encampments of mammoth hunters have been found between **Dolní Věstonice** and Pavlov.

Extra tip: The Venus of Dolní

Věstonice brought world-class commotion to this small village. This figure of a naked woman dates back to 29,000–25,000 BC, and is undoubtedly the oldest known ceramic statuette in the world. A 3.5 km long archaeo-trail leads through the area up to Pavlov. Among wine nature trails, the twenty-kilometre Mikulov trail can be recommended.

www.palava.ochranaprirody.cz/en



THE ATTRACTIONS OF MIKULOV

Even from a great distance **the majestic castle** tempts you to come and visit it. No wonder, even Napoleon himself spend the night here! The chateau is the seat of the Regional Museum in Mikulov and houses great exhibitions. The chateau garden with many terraces is one of the largest chateau and garden areas in the Czech Republic.

Extra tip: Mikulov is a famous mecca for excellent cuisine. The Kuk Bistro serves fresh homemade bread and soup, aromatic coffee and local wines. The Drogérka Bistro has a tempting menu and a sweet bar. There is an irresistible view of the chateau and the Holy Hill from the Volařík winery. The Tanzberg Hotel serves traditional Jewish dishes.

www.rmm.cz/index_en.html



LICHTENSTEIN FOOTPRINTS

Don't miss **the Empire Pohansko Hunting Lodge** in the Lednice-Valtice Area. On foot or by bike. The simple building is surrounded by arcades and observation decks, the reliefs depict the stories of ancient heroes. Walk through the exhibition on a Slavic fort from the ninth century and the outdoor model with a replica of this cult site.

Extra tip: Břeclav is not far from there. The best place you can learn about well-known family is the Liechtenstein House. It houses a collection of all models of the buildings in the Lednice-Valtice Area, you will learn how they were made. Remember to visit the Jewish synagogue and the chateau in Břeclav, too. There is a great view of the town from the tower in the middle.

www.muzeumbv.cz/zamecek-pohansko



SOUTH MORAVIA'S DAZZLING NATURE

The confluence of the Morava and Dyje rivers in the middle of deep floodplain forests is a must-see place. The dense network of meandering river branches and flooded pools is a paradise for black storks, black kites, eagles and bee-eaters.

Extra tip: The Dolní Morava biosphere reserve has a double UNESCO status. It joins Podluží,

the Lednice-Valtice Area and Pálava. Pálava is a landmark with its steep slopes covered with steppe, forests and vineyards. Full of floodplain meadows and forests, the south of the reserve in the floodplain of the Dyje River contrasts with the central part of the reserve, a landscape created by humans in the 19th century.

www.dolnimorava.org/index.php?lang=en



MIKULOV AND AROUND

The Dietrichstein Tomb on the square is the last resting place of members of this famous family. You will see findings from the graves and much more. The synagogue in Mikulov has unique four arched domes and attracts visitors with an exhibition about Rabbi Löw. With 4,000 tombstones, this Jewish cemetery is one of the largest in the Czech Republic.

Extra tip: It is less than 2 kilometres on foot from Mikulov to the Na Tuřoldu Cave, which has 7 floors. You feel like at the bottom of a coral reef inside the cave, near the emerald lake surrounded by calcite crystals. Rare species of bats nest there in the off-season. Walk along St. Jacob's Trail to Table Mountain with magnificent views of the surrounding landscape.

www.infomikulov.cz/item/dietrichsteinska-hrobka